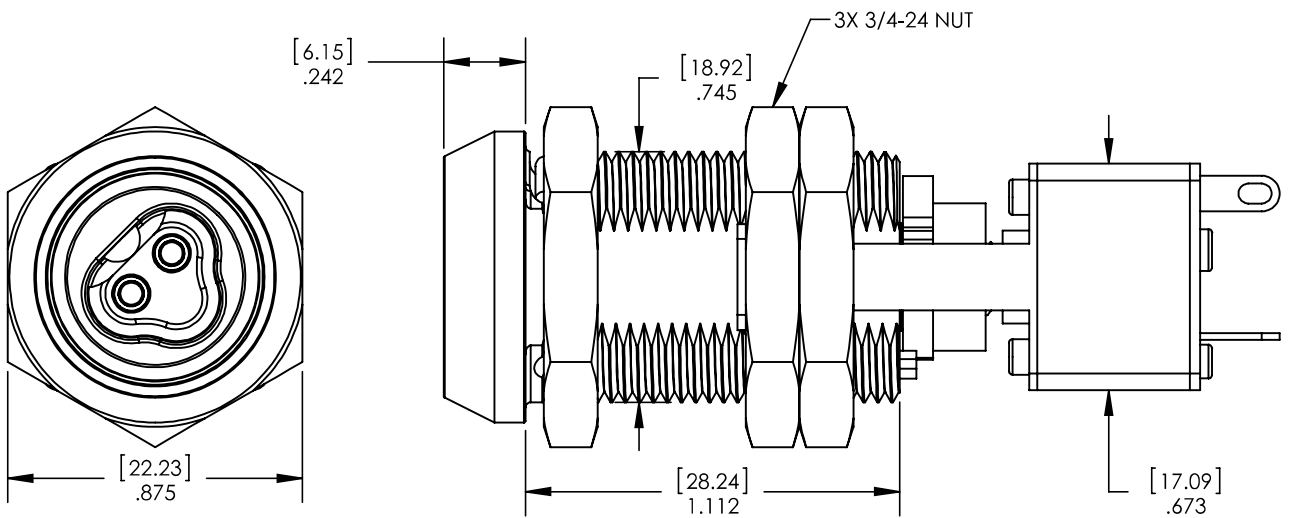
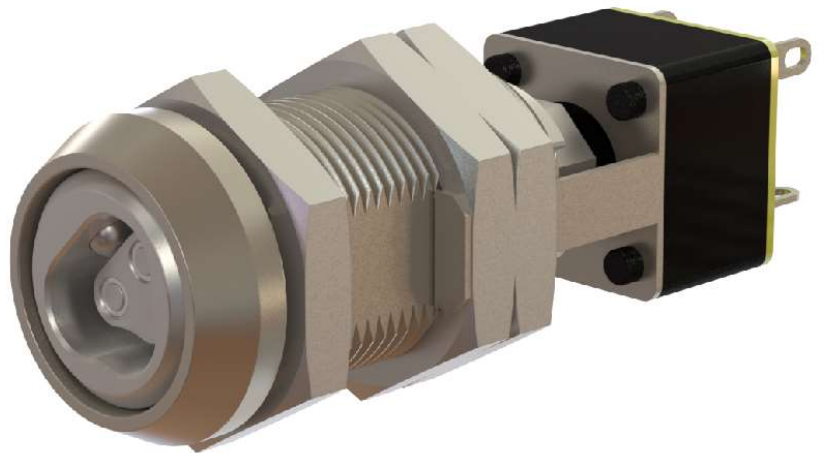
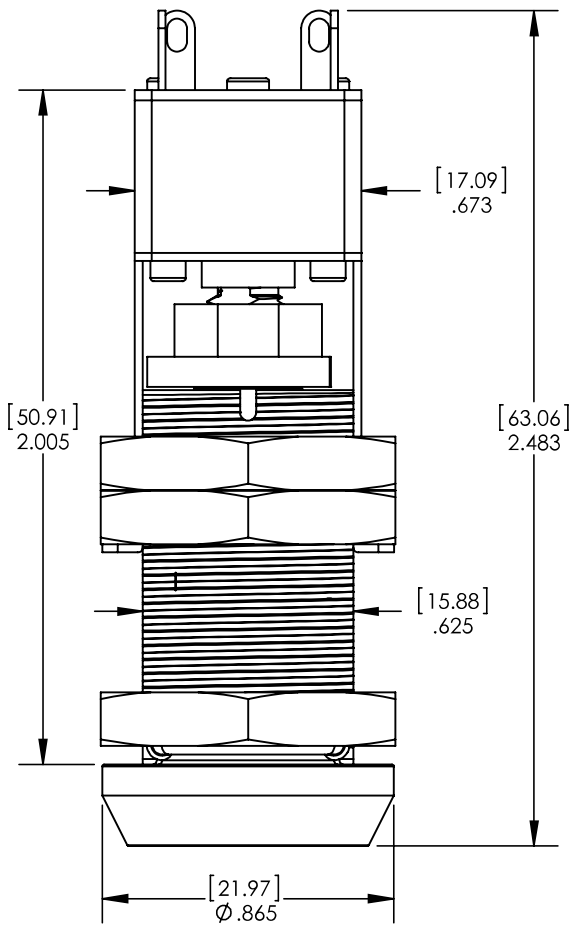


1amp Max. @ 30V AC or DC (inductive or resistive load)



PART NUMBER
CL-S02



1105 NE CIRCLE BLVD
CORVALLIS OR 97330
(541) 738-5500

Proprietary Information of Videx
Unlawful to copy, reproduce, or
disclose to others by any means
without express written consent.

DESCRIPTION
SWITCH LOCK, .75" CAM-STYLE, ON/OFF

PDF CREATED
3/21/2012

REV
A